



# TILE RESTORATION CENTER

## *Reproduction of Historic Tiles*

Specializing in American Arts and Crafts Tiles  
Ernest Batchelder and Claycraft Designs  
Tiles for Fireplaces, Fountains, Floors, Wainscot,  
Kitchen, and Bath



Seattle, Washington  
Phone: (206) 633-4866  
Fax: (206) 633-3489  
[www.tilerestorationcenter.com](http://www.tilerestorationcenter.com)

***2007 Catalog***

# Table of Contents



*"An installation of tile work thoughtfully designed and properly executed will be as fine fifty years hence as it is today." – Ernest Batchelder*

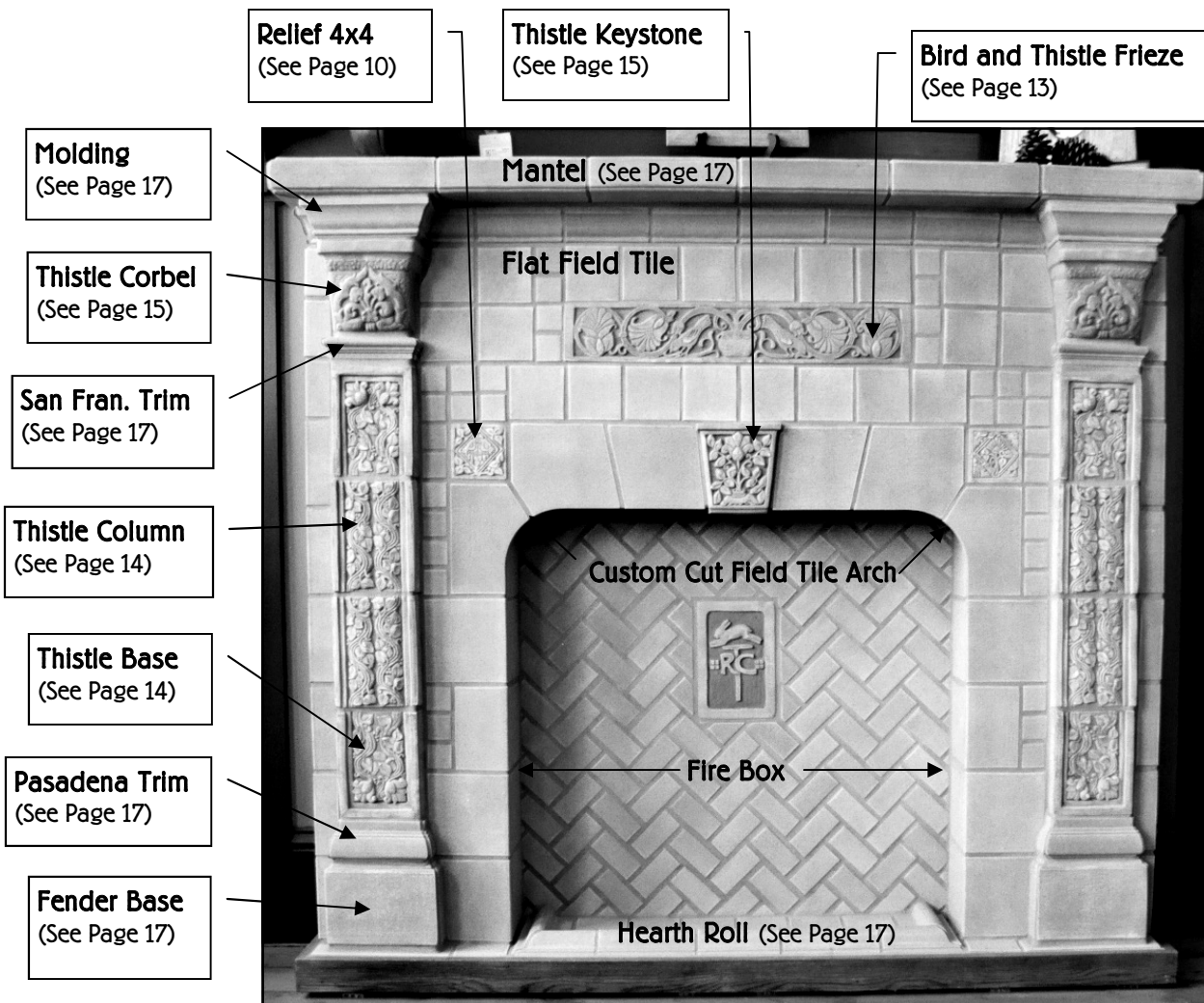
## Background Information:

About Our Company.....	1
About Ernest Batchelder.....	2
How We Make Our Tiles.....	3
About Our Tiles.....	4
Tile Installations.....	5
Color Information.....	7
Color Illustrations.....	8

## Tile Images:

2x2's, 3x3's and 4x4's.....	9
4x4's.....	10
4x4's and 6x6's.....	11
6x6's, 8x8's, and 6x9's.....	12
Larger Tiles, Murals, and Friezes.....	13
Corbels and Keystones.....	15
Relief Trim Tiles.....	16
Extruded Trim Illustrations.....	17

## Glossary of Fireplace Features



**Display Fireplace , 5' x 5'** above and cover photos. Featured at Rejuvenation, 2910 1st Ave S, Seattle,



## About Our Company

**Tile Restoration Center** is a small ceramic tile company in Seattle, Washington dedicated to producing historically accurate reproductions of American Arts & Crafts tiles from makers such as Ernest Batchelder and Claycraft. We have also created dozens of new designs in the Arts & Crafts style to complement those historical images. We pride ourselves on the amount of care and hand work that goes into each and every tile we make, not just for looks, but in the dignified and creative spirit of the early twentieth century.

While Ernest Batchelder's factory employed up to 175 workers at the height of his production, the size of our team varies from 4 to 6 workers. As every step of production influences the final results, each team member is cross-trained in many areas of production. This means that every tile we produce is truly the result of a coordinated effort. We have recreated and still employ many of the techniques and materials of the Arts & Crafts era, as we have found that there is no substitute for the look and feel that hand labor creates.

The quality and variety of our historic and more recent designs, the timeless character of our pictorial themes, and our warm, muted colors distinguish our tiles among other high quality products. The hand-wrought individuality and natural tones of our tiles make them uniquely suited to accent homes from the quaintly rustic to the tastefully modern. The soft, natural, and earthy qualities of our tiles make them feel familiar, even in new installations, where they add a touch of coziness to any home. We dedicate our efforts not just to the quality of the products of the Arts & Crafts era, but also to the ideals that value the combination of hand labor and creativity.

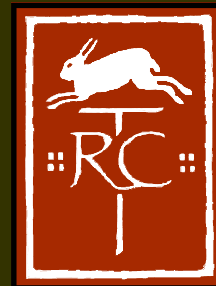
## Company History

**Tile Restoration Center** was founded in the late 1980's by Marie Glasse Tapp, a potter and ceramic artist familiar with the work of Ernest Batchelder and other Southern California tile makers of the early twentieth century. In addition to teaching ceramics and producing tiles and pottery, Marie set about restoring tiled fireplaces on sites around the country.

As she worked to restore historic tile installations in Washington State, she encountered the need to replace a few irreparable Batchelder tiles. In order to do this, Marie needed to deduce and devise a method to create new tiles with the look and feel of those old distressed tiles. The concept of Tile Restoration Center was then set to evolve from a business of strictly restoration to primarily reproduction of historic tiles. Marie chose to focus on the work of Ernest Batchelder and Claycraft, whose subtle, unglazed surfaces flowed with warmth and craftsmanship.

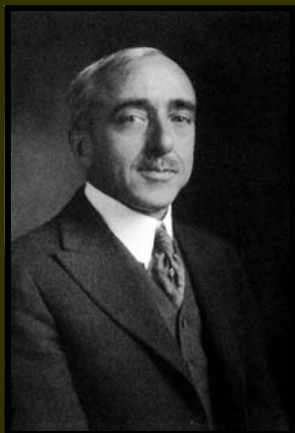
Marie was later joined by her daughter, Della Tapp, and together they developed Tile Restoration Center into a nationally recognized and respected source for quality historic reproduction tiles. They reproduced dozens of designs from Batchelder and Claycraft, and added several new designs in the style of those early artisans.

In 2005, Marie and Della sold Tile Restoration Center to Steve Moon, the studio manager and a team member for more than 10 years. As Marie and Della did before him, Steve honors the quality and craftsmanship of the past while building on its strong foundations. We look forward to producing many more historic reproduction designs, as well as original designs that will complement our extensive catalog.





# About Ernest Batchelder and The Arts and Crafts Movement



*Ernest Batchelder  
1875-1957*

California artist and tile-maker. His tileworks opened in 1912 and flourished until 1932 when, like many businesses, it became a casualty of the Great Depression.



Original Batchelder Tile  
circa 1925, 4" x 4"

Ernest Batchelder (1875-1957) was an accomplished designer who brought the tradition of the Arts and Crafts movement to the American West Coast. In 1901, Batchelder, a teacher of design in Minneapolis, brought his precepts of ordered design – harmony, balance, and rhythm – to his classes at Throop Polytechnic (later renamed Cal Tech) in Pasadena. Batchelder is considered to be perhaps the most influential idealist-reformer of the California Arts and Crafts movement. He and many other artists, writers, architects, and craftsmen who shared the high-minded characteristics of the Arts and Crafts movement, built bungalows and mansions on the Arroyo Seco in Pasadena. It was here under the shade of the olive trees in his Pasadena garden that Batchelder started his tile business. He got the clay from a local brickyard and brought it home in gunny sacks, all mixed and ready for use. Thus began a modest business which then developed into one of national importance.

His tiles were sought after and used all across the country. While at the height of production, Batchelder's factory had moved to Los Angeles and employed as many as 175 workers. To maintain the handmade quality that had established his business, he set up many small hand-work stations for tile production. In the broad spaces of the tile works one would see many workers at their work benches making individual tiles. The tiles themselves were then loaded and fired in enormous kilns up to 65 feet long.

Batchelder's tiles are distinguished by the quality of their designs, the variety of their pictorial themes, and their muted and enduring colors. Each tile has a degree of individuality which continues to appeal to us when so much else in our lives is of assembly line origin. Although the Great Depression ended the tile works, Batchelder's legacy lives on in a multitude of installations. It is our pleasure and challenge at Tile Restoration Center to reproduce his work today, and to share with his many admirers the continued excitement generated by Batchelder's designs.



Double Peacock tile, DP1 12" x 12" (see p. 13)

*"We watched them (the drying tiles) as a cook watches a pancake on the griddle." – Ernest Batchelder*



## How We Make Our Reproduction Tiles

**A**t Tile Restoration Center, we make historically accurate reproductions of Batchelder and Claycraft tiles using many of the original designs as well as many of the same methods Batchelder devised. Rather than using mechanized processes of mass production, we make each tile by hand. It is this hand labor and attention to details that give our tiles their strong and subtle character.

An initial drawing, sized up to allow for shrinkage, is made and transferred to wet clay which is then carved to achieve the raised surface. A plaster cast of the clay relief is poured and when it has cured, it is used to press wet clay into a new relief tile. The tile is air-dried before having its first kiln firing to the bisque level. To achieve the subtle coloration, multiple layers of mineral stains, or *engobes*, are hand applied with small sponges. The second firing to over 2000° F fuses the colors and matures the clay, making the tiles semi-vitreous and durable. After cooling, the tiles are hand-finished and sealed.

Our reproduction Arts & Crafts style tiles are appropriate in interior and exterior settings. Like those from the Batchelder and Claycraft catalogs, our tiles are substantial and durable. Clients have used our tiles in traditional bungalows and large historic buildings as well as incorporated them into contemporary settings. The vitality and imagery of our tiles coupled with their good design make them a joy to live with.



*"The subtle differences in our tiles are not contrived but are the natural result of the hand work process. We make the very best hand made tile we possibly can."*

Ernest Batchelder



TRC Reproduction of  
Batchelder's Tile

Horse with Rider, 4" x 4"  
HM1 (see p. 9)



# About Our Tiles



*"Real beauty never becomes old-fashioned or out of date."  
– Ernest Batchelder*



## Custom Carving

We often create or adapt new custom tile designs, using the same care and craftsmanship that we invest in our own standard designs. First, we create an original drawing adapted from your photo, business logo, or other image. Next, we carve an original clay model from the image. Finally, a plaster mold is formed, from which your new tile is made.

## Seconds

"Seconds" tiles are available at a substantially reduced price to people who are local or visiting the area. Color and selection are limited. Please call ahead to schedule an appointment.

## Uses for TRC Tiles

Fireplaces, fountains, floors, wainscots, kitchens, and bathrooms. We can not recommend our tiles for areas of excessive cleaning, i.e. counter tops or shower stalls.

## Tile Sizes

Our listed tile sizes are nominal. That is, a "4" x 4" tile will measure approximately 3-3/4" square. This way, they are modular so that tiles of different sizes fit together and automatically include the recommended 1/4" grout line in layout measurements. The standard thickness for our tiles is 5/8". Our tiles will vary slightly in size and shape.

## Lead Time

Average production time is 6-8 weeks from contract and deposit, but can vary widely depending upon order size and complexity, and the amount of work in the studio.

## Carved Relief Designs

We offer more than 170 relief tile designs. Many are reproductions of Batchelder and Claycraft designs, with many newer designs in the Arts & Crafts style. Included are several Relief Trim designs for many design applications. See pages 9-16 for Relief Tile illustrations.

## Field Tiles

We offer Flat Field Tiles in all sizes from 1" x 1" up to 8' x 12", and we can also create bullnosed edges and custom cuts and sizes. These tile sizes are nominal, and all are approximately 5/8" thick. See *Tile Installations* pages for uses.

## Extruded Trim Tiles

We make over 20 Extruded Trim designs for countless design-enhancing applications. They are made in standard Field Tile colors, and are usually made in 4" or 6" lengths (nominal), but can be made any length up to 12". See page 17 for profiles.

## Distributors

We have highly qualified distributors throughout the US and in Canada (please see distributor list insert or look online). If there is a distributor in your area, we request that you work with them. If you are not, you are welcome to work directly with us.

## Design Services

We offer complete custom design services for many different tile projects and welcome inquiries. A great way to start is to browse our installations for the look you prefer.

## Installation

Our tiles require special care during installation and grouting. Contact your distributor or consult our website for installation guidelines.

## Durability

TRC tiles are fired to over 2000° F, are semi-vitreous (moisture absorption of 1-6%) and suitable for use in most installations. However, we do not recommend the use of our tiles for installations where there is continuous contact with water or heavy abrasion. Special care must be taken to protect the tiles in these applications.

## Warranty

We are confident in the quality and durability of our tiles, however, we do not guarantee our tile against chipping, spalling, etching, discoloration, wearing, or scratching. This is because we have no control over and are not responsible for the materials used to install our tile, the method of installation, backing, skill of the installer, type of maintenance, usage, or amount of traffic. Our only obligation shall be to replace or pay for any materials proved defective. Beyond the purchase price of materials supplied by us, we assume no liability for damages of any kind.

*"A single sample tile furnishes only a slight clue as to the ensemble produced by a completed project."*

*– Ernest Batchelder*



## Tile Installations



Dean Fireplace *before* renovation with TRC relief and Custom Color Field Tiles, and...

*...after*



"Mondrian" style Fireplace, Pasadena, featuring Thistle Keystone and Skewbacks (p. 15). Courtesy of Mission Tile West



Patterned Fireplace using field tiles exclusively. Courtesy of Spellman Construction.

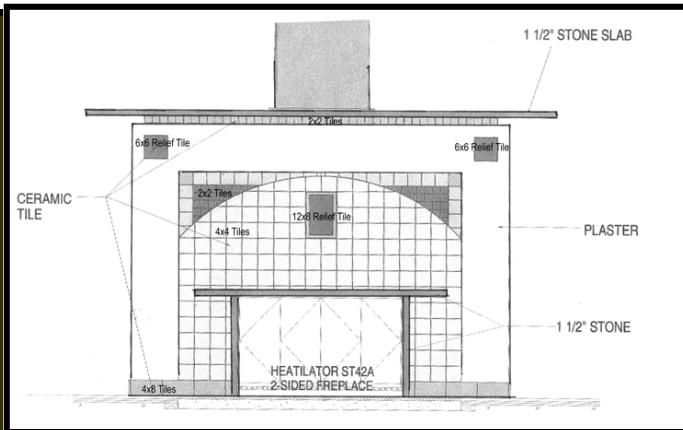


Creative use of Pine Cone Relief Trim (p. 16) and Corbel (p. 15) for kitchen backsplash

Please visit [www.tilerestorationcenter.com](http://www.tilerestorationcenter.com) for more installation pictures and ideas.



# Tile Installations



Architect's drawing for custom arched fireplace, Seattle.



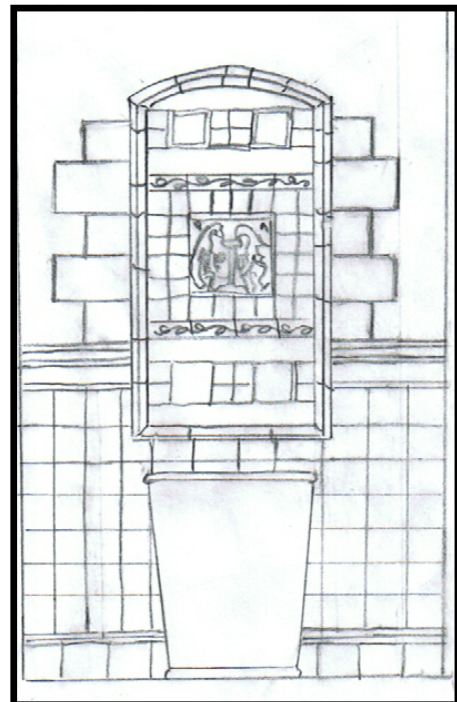
Fireplace with custom arch, Utah, with *curved* RT trim (p. 17).



Custom arch fireplace, Montana, with *curved* BHR trim (p 17).  
Photo: Christina Bauer



Peacock fountain, Seattle, converted from a brick barbecue.  
Courtesy of L. Kreisman.



Concept drawing for large outdoor fountain featuring Double Peacock with bowl (p. 13).



*"Our color effects have been described as luminous, mellow, and glowing." – Ernest Batchelder*



## Color Information

### Colors

Our colors are subtle stone-like tones. Unlike glazes, which can cover over a clay body, our subtle colors are derived from the interaction of our stains with the clay. When our stain colors are fired into the clay of the tiles, they become a durable and integral part of the clay body. This interaction between the clay and the stains, combined with the hand-made character, adds a natural and appealing variety to all of our tiles. All of our tiles will vary naturally in color and tone. This variation is an integral part of the overall look and character of the tiles.

We offer twelve Field (or flat tile) colors and twelve Inflow (or Relief tile) colors (see p. 8). The field colors are used for all Flat Field tiles as well as on the Extruded Trim tiles (p. 17). Our Relief Tiles are made with two colors: The "Inflow" color is in the recessed background areas, while the raised surface, the *topcoat* is stained with our Earth Brown color. Our many colors are compatible with each other and in many settings, so the selection and variety of different colors is a matter of great personal choice.

Our "Multicolor" relief tiles are hand painted (see p. 3) with up to 12 different colors. All "Multicolor" are also available in our standard inflow colors.



### Color Matching

The color method developed by Ernest Batchelder was unique to his tiles. After many years of research, TRC has recreated this method. One of the services we are able to provide is custom color matching. Whether you need to make a match with paint samples, tapestry, or original tiles, we can be of assistance to you. Call or contact your distributor for details.

#### Field Colors:

F-1	Earth Brown
F-2	Cinnamon
F-3	Walnut
F-4	Chestnut
F-5	Chamois
F-7	Moss
F-8	Sea Mist
F-9	Aqua
F-10	Tortoise
F-11	Cornflower Blue
F-12	Butternut Yellow
F-13	Tahoe Blue

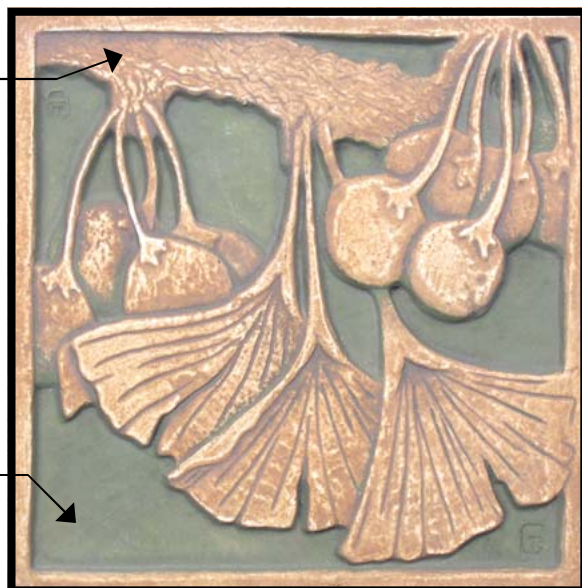
#### Inflow (Background) Colors:

I-1	Meadow Green
I-2	Eucalyptus
I-3	Blue Mist
I-4	Forest Green
I-5	Pewter
I-7	Jade
I-8	Deep Teal
I-9	Kalamata
I-10	Redwood
I-11	Deep Blue
I-12	Maize
I-13	Wheat



Topcoat  
(Earth Brown)

Inflow Color  
(Forest Green)



**Sample Kits** – including all available standard colors are available for purchase.

Allow 2-4 weeks delivery.

# Tile Colors

These printed images can serve only as a rough guide to the subtle tone of our color palette. We would recommend viewing sample tiles or ordering a sample kit (page 7) before purchasing.

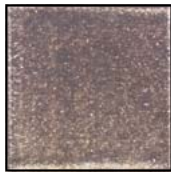
## Field Tile Colors



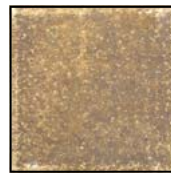
Earth Brown  
F-1



Cinnamon  
F-2



Walnut  
F-3



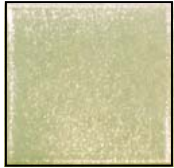
Chestnut  
F-4



Chamois  
F-5



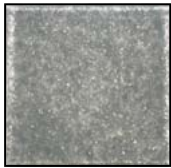
Moss  
F-7



Sea Mist  
F-8



Aqua  
F-9



Tortoise  
F-10



Cornflower Blue  
F-11



Butternut Yellow  
F-12

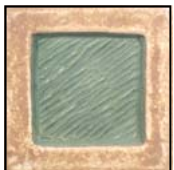


Tahoe Blue  
F-13

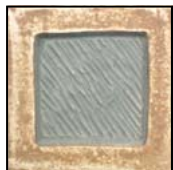


**Tile Colors will vary:** All of these tiles are Earth Brown (F-1) and demonstrate the typical range of color and tone within any one colorway. This variety is a normal and desirable result of combining our hands-on processes with naturally varying materials.

## Inflow Tile Colors



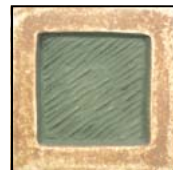
Meadow Green  
I-1



Eucalyptus  
I-2



Blue Mist  
I-3



Forest Green  
I-4



Pewter  
I-5



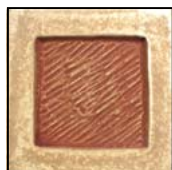
Jade  
I-7



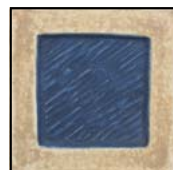
Deep Teal  
I-8



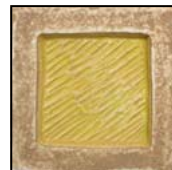
Kalamata  
I-9



Redwood  
I-10



Deep Blue  
I-11



Maize  
I-12



Wheat  
I-13





## 2" x 2" Relief Tiles



Batchelder  
Accent 2 Petal  
EB1



Batchelder  
Accent 3 Petal  
EB2



Batchelder  
Accent Leaf &  
Berry EB3



Batchelder  
Accent Leaf  
EB4



Batchelder  
Accent Dog  
EB5



Circle Rabbit  
O6



Circle Blossom  
O7



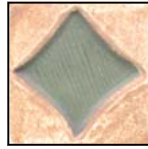
Ginkgo  
GTG



Pine Cone  
PCS **NEW!**



Hare  
GTH



Diamond  
EBD



Holly  
ACH



TRC Logo Small  
(2" x 1-1/2")  
TRCLS **NEW!**



2x3 TRC  
Logo  
TRCL

## 3" x 3" Relief Tiles



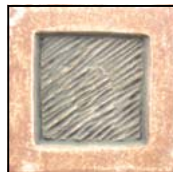
Pine Cone  
PC4



Ginkgo  
GTG5



Thistle  
TS1



Framed Square  
GTS



Dogwood  
F1



Leaves Diagonal  
LD



Thistle Diagonal  
TD



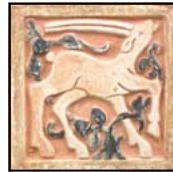
Pomegranate  
P1



Claycraft Bird  
CCB **NEW!**



Claycraft Dragon\*  
CCD



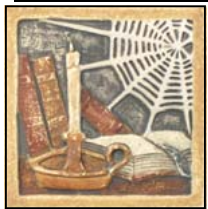
Claycraft Gazelle\*  
CCGZ



Country Home\*  
GTCH

\* Tiles shown in "Multicolor" are also available in standard inflow colors.

## 4" x 4" Relief Tiles



Claycraft Candlestick\*  
CCCS **NEW!**



Claycraft Inkwell\*  
CCIW **NEW!**



Cypress\*  
CCC



English Cottage\*  
CCEC



English Manor\*  
CCEM



Tuscan Wall\*  
CCTW



Seagull\*  
CCSG



Horse with Rider  
HM



Horse Rider and Hare  
HMH **NEW!**



Hunting Man with Dog  
HMD



Lion  
L1



Lovebirds  
O5



Glasse Tapp Bird,  
Left  
GTBD L



Glasse Tapp Bird  
Right  
GTBD R



Glasse Tapp Grayling  
GTF



Glasse Tapp Rabbit  
GTR



Tree Frog  
SSTF



Winter's Rabbit  
RWR



## 4" x 4" Relief Tiles, continued



Batchelder Fortress  
EBF



Batchelder Tree, left  
EBTl



Batchelder Tree, right  
EBTR



Batchelder Castle  
EBC



Viking Ship  
S2



Oak Leaf  
SSOL



Diamond Flower  
D1



Diamond Ivy  
D2



Diamond Birds  
D3



Diamond Raven  
D4



Ivy Tree  
SQ3



Celtic Knot  
CK



Glasse Tapp Harvest  
Woman  
GTHW



Glasse Tapp Planter  
Woman  
GTPW



Glasse Tapp Summer  
Woman  
GTSW



Glasse Tapp Winter  
Woman  
GTWW



Swan, right  
SW1



Swan, left  
SW2



Pine Cone  
PC10



Ginkgo  
GTG4



Thistle Flower  
GTB



Lily Pad  
LP4



Dragon Fly  
SDDF **NEW!**



4x4 Mayan Face  
M1



4x4 Mayan Face  
M2



4x4 Mayan Face  
M3



4x5 Mayan Face  
M4



4x4 Mayan Face  
M5



4x4 Mayan Face  
M1 Reverse



4x4 Mayan Face  
M2 Reverse



4x4 Mayan Face  
M3 Reverse



4x5 Mayan Face  
M4 Reverse



4x4 Mayan Face  
M5 Reverse



## 4" x 4" Relief Tiles, continued: Vine Series



Vine with Rabbit  
V1



Vine with Raven  
V2



Vine with Grapes, left  
V3



Vine with Grapes, right  
V4



Vine with Leaves, right  
V5



Vine with Squirrel  
V6



Vine Corner  
V7



Vine with Jay  
V8



Vine Connector  
V9



Vine with Leaves, left  
V10



Terminating Leaf &  
Grape, left  
V11



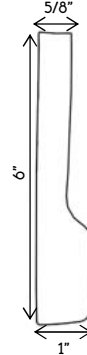
Terminating Leaf &  
Grape, right  
V12



Terminating Vine  
Base, left 4" x 6"  
V13 **NEW!**



Terminating Vine  
Base, right 4" x 6"  
V14 **NEW!**



Profile of Terminating  
Vine Bases

**Vine Series Note:** Be sure to use special care when selecting vine series tiles to ensure that all of the vines line up properly. To do this, make sure that there are equal numbers of left- and right-turning designs.

## 6" x 6" Relief Tiles



Pine Cone  
PC1



Tudor Rose  
TUR



Ginkgo  
AMG



Peacock  
PK1



Viking Ship  
S1



Bird on a Branch  
SQ1



Grapes  
SQ2



Old Tree, Right  
T1



Trees with Village  
T2



Old Tree, Left  
T3



Circle Hunter  
O1



Circle Musician  
O2



Circle Rabbit  
O3



Circle Peacock  
O4



Circle Dog  
O8



## 6" x 6" Relief Tiles, continued



Scott's Flowers  
SG1



Gothic  
CCGO



Flower Pot  
SG4

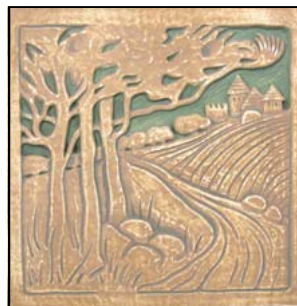
## 8" x 8" Relief Tiles



Lily Pad  
LP8



Tree, right  
T4



Tree with Village  
T6



Tree, left  
T7



Pine Cone  
PCS



Grille, pierced for water or air  
FG

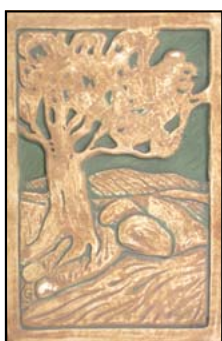


Hearthside Dream with Title\*  
HD  
Also available in multi-color,  
shown on page 13.



Hearthside Dream with Boy\*  
HDB  
Also available in multi-color,  
shown on page 13.

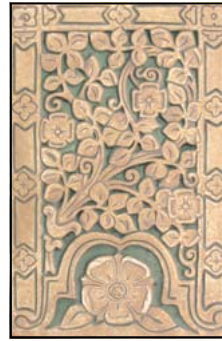
## 6" x 9" Relief Tiles



Tree with Stones, left  
T5



Tree with Stones, right  
T8



Flower Frieze  
GTFL



TRC Logo large  
TRCLL



## Large Relief Tiles, Murals, and Friezes

HD1



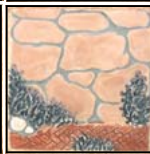
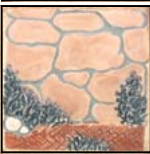
HD2



HD3



HD4



HD5

HD6

HDB, multicolor\*

HD5

HD6

HD, multicolor\*

Hearthside Dream Series, multicolor. The 8" x 24" mural includes one 8" x 8" center tile, with four 4" x 4" tiles on each side. Center tile can be HDB (shown), or HD (right).



Peacock Frieze 6" x 18"  
PF



Frieze Extension 3-1/4" x 6"  
GTPK  
left or right side



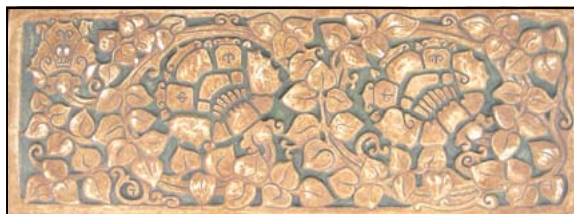
Thistle and Bird Frieze 4" x 24"  
TB3



Reindeer Frieze 4" x 28"  
DF1



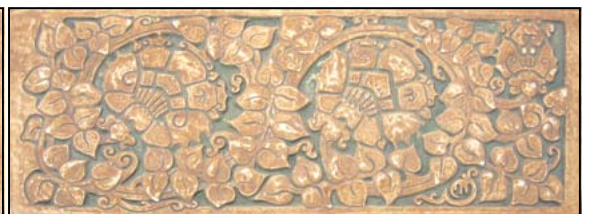
Ginkgo Frieze 6" x 18"  
GF



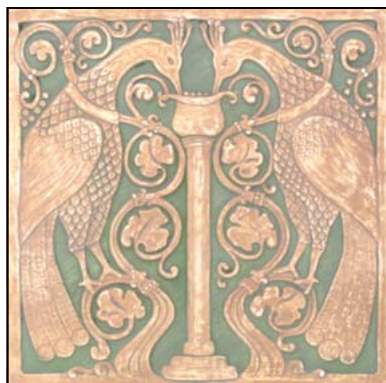
Goldstein Frieze 6" x 16"  
SG Left



Flower Pot Center 6" x 6"  
SG4



Goldstein Frieze 6" x 16"  
SG Right



Double Peacock  
12" x 12"  
DP1



Double Peacock with Bowl  
12" x 12"  
DP2  
With protruding bowl for use in  
fountains (see page 6)



## Large Relief Tiles, Murals, and Friezes, continued



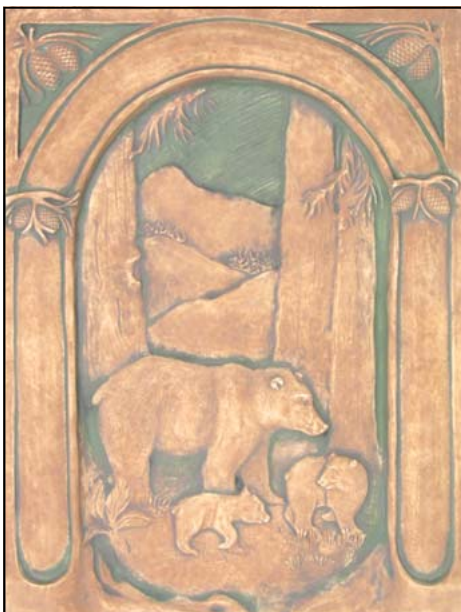
Pine Panel, Left  
6" x 24" (Four 6" x 6" Tiles)  
PPL



Thistle Column, THC; Thistle Column Base, THCB  
Each piece measures 6"W x 8"H x 2"D. Use any number of THC to extend column effect (see display fireplace on inside cover).



Pine Panel, Right  
6" x 24" (Four 6" x 6" Tiles)  
PPR



Bears in Forest  
12" x 16" x 2"  
BR1

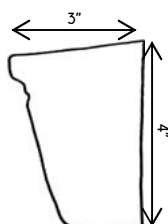


Elk in Forest  
12" x 16" x 2"  
E1

## Corbels and Keystones



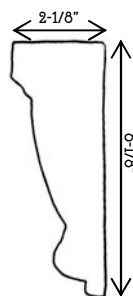
Flower Pod Corbel  
4"H x 3-3/4"W x 3"D  
FP1



Plain Corbel  
3-3/4"H x 3-3/4"W x 1-1/2"D  
FP3



Thistle Stalk Corbel  
6-1/8"H x 4-1/4"W x 2-1/8"D  
FP2



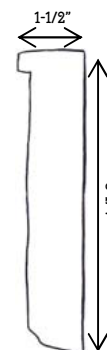
Thistle Skewback, left  
5-7/8"H x 4-7/8"W x 1"D  
TH4



Thistle Keystone  
6-1/4"H x 5-7/8"W x 1-1/2"D  
TH3



Thistle Skewback, right  
5-7/8"H x 4-7/8"W x 1"D  
TH5



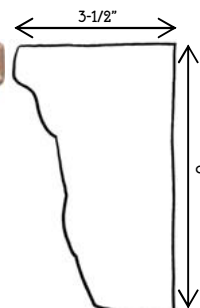
TH3 Keystone profile  
(Skewbacks are flat)



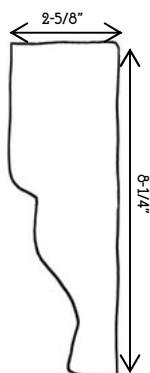
Thistle Keystone  
7"H x 6-1/4"W x 2-1/2"D  
TH7



Thistle Corbel  
6"H x 7"W x 3-1/2"D  
TH6



Pine Cone Corbel  
8-1/4"H x 6-3/8"W x 2-5/8"D  
PC8



Plain Keystone  
10-1/8"H x 8"W x 1-1/4"D  
RT6



# Our Tiles

## Relief Trim



Ginkgo Stretcher  
2" x 6"  
GTG2



Ginkgo Corner  
2" x 2"  
GTG3



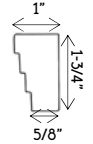
Pinecone Stretcher  
2" x 6"  
PC2



Pinecone Corner  
2" x 2"  
PC3



Checker Dentil Stretcher  
2" x 6"  
CD2  
Profile shown at right



The Ginkgo Trim, Pine Cone Trim, and Vine Trim have standard flat profile approximately 5/8" thick. Other relief trims have varying profiles as illustrated.



Vine Trim Corner  
4" x 4"  
VT1



Vine Trim Stretcher  
2" x 4"  
VT2B



Vine Trim  
Connector  
2" x 2"  
VT6



Vine Trim Stretcher  
2" x 4"  
VT2A



Vine Trim Corner  
2" x 2"  
VT3



Vine Trim Stretchers are usually used with alternating VT2A and VT2B designs.



Pine Cone Corner, left  
4" x 6"  
PC7-L

Pine Cone Stretcher  
4" x 6"  
PC6

Pine Cone Corner, right  
4" x 6"  
PC7-R



Thistle Trim Corner, left  
4" x 8"  
TH2-L



Thistle Trim Stretcher  
4" x 8"  
TH1

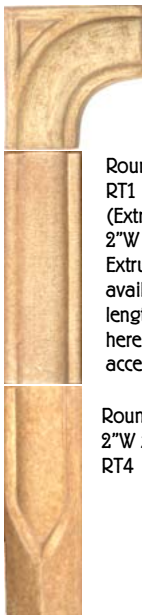


Thistle Trim Corner, right  
4" x 8"  
TH2-R



Profile for both Pine Cone and Thistle Trim pieces, 1-7/8" deep

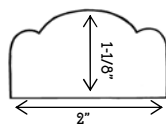
### Rounded Trim



Rounded Trim  
Corner  
4" x 4"  
RT3

Rounded Trim  
RT1  
(Extruded, Pg 17)  
2"W x 6"H  
Extruded Trim is  
available in any  
length. Shown  
here with relief  
accessories.

Rounded Trim Base  
2"W x 6"H x 1-1/2"D  
RT4



Profile for the RT  
trim, Ivy Trim, and  
Berry Trim pieces,  
1-1/8" deep

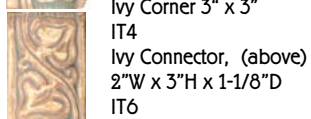


Profile for RT4  
Rounded Trim  
Base

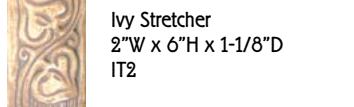
### Ivy Trim



Ivy Corner  
2" x 2"  
IT1



Ivy Corner 3" x 3"  
IT4  
Ivy Connector, (above)  
2"W x 3"H x 1-1/8"D  
IT6



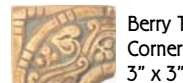
Ivy Stretcher  
2"W x 6"H x 1-1/8"D  
IT2



Ivy Base, left or right  
2"W x 6"H x 1-1/8"D  
IT5

Ivy Base, left or right  
2"W x 6"H x 1-1/4"D  
IT3

### Berry Trim



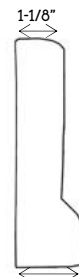
Berry Trim  
Corner  
3" x 3"  
BT3



Berry Trim Stretcher  
2"W x 6"H x 1-1/8"D  
BT1



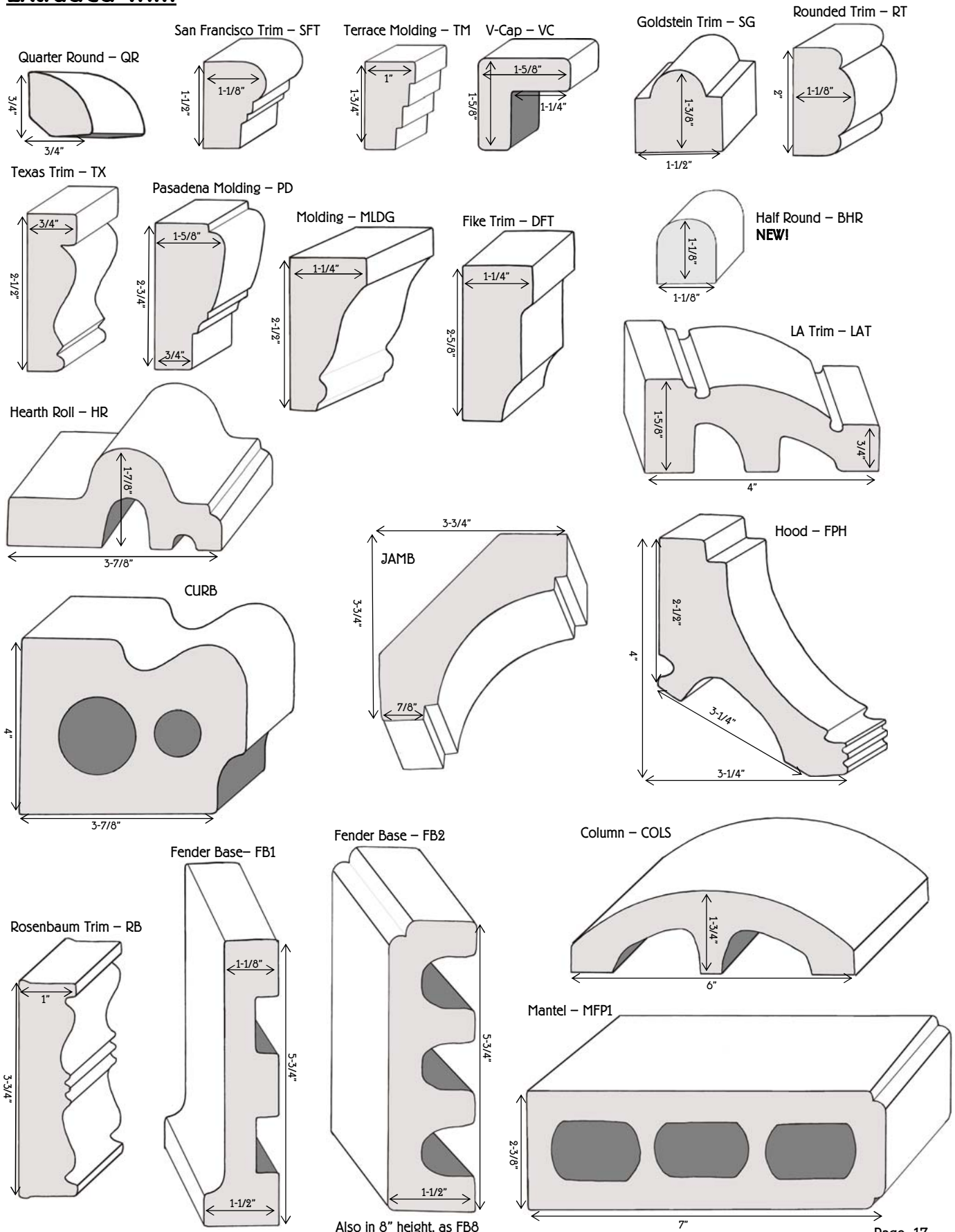
Berry Base, left or right  
2"W x 6"H x 1-1/4"D  
BT2



Profile for both  
Berry Base and  
IT3 Ivy Base

## Extruded Trim

Extruded trim tiles are available in any length from 2" to 12". They can be ordered in any standard field tile color.





**Specializing in American Arts and Crafts Tiles  
Ernest Batchelder and Claycraft Designs  
Tiles for Fireplaces, Fountains, Floors, Wainscot,  
Kitchen, and Bath**

**Tile Restoration Center:**

A Monkey Works, Inc. Company  
Steve Moon, Owner

Seattle, Washington  
Phone: (206) 633-4866  
Fax: (206) 633-3489  
E-mail: [trc@tilerestorationcenter.com](mailto:trc@tilerestorationcenter.com)  
[www.tilerestorationcenter.com](http://www.tilerestorationcenter.com)

